



The Spirit of Affordable Living

IRASA PARK, PALGHAR

Development is about transforming the lives of people,
not just transforming economics

About IRASA

IRASA Housing is built on four pillars - **Great Design, High Quality, On-time delivery and Transparency.**

We believe that each house must be well ventilated and properly lit to ensure a happy home. In addition the projects are designed in such a way that maintenance costs are kept to a minimum while not compromising on essential amenities.

From the best quality cement and steel to the plumbing and electrical fittings, we take care to ensure that an IRASA house is of the highest quality.

We are constantly evaluating the latest construction techniques to ensure that your home is built using environmentally friendly processes while delivering it to you on time.

Every transaction that we undertake is marked by trust, communication and transparency. We firmly believe that buying a home should be a pleasant experience and we want all of you to enjoy every interaction with IRASA.

“Our vision has always been to create best-in-class homes that fulfil the aspirations of our customers at affordable prices.”



Design is in everything we make,
it is a mix of craft, science,
storytelling and philosophy.



ISOMETRIC VIEW

1BHK



2BHK





Quality is not an act, it is a habit.

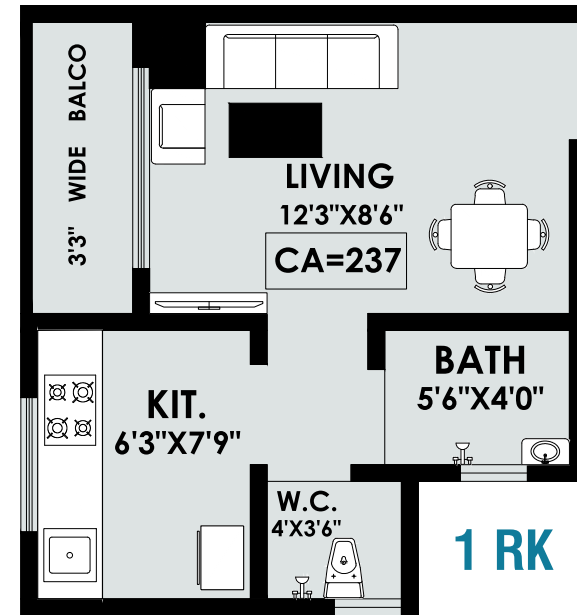
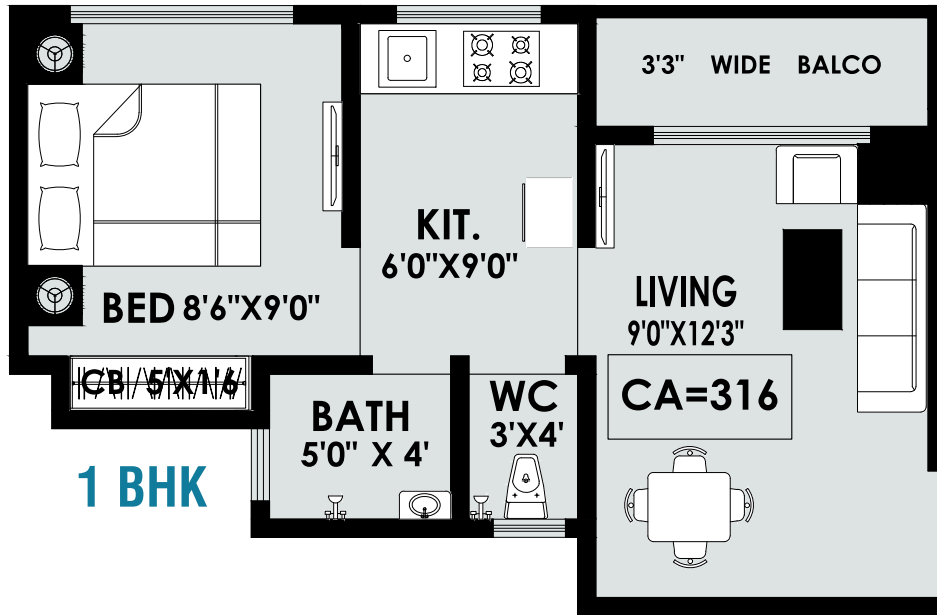
SPECIAL AMENITIES OF THE TOWNSHIP

- Exclusive Complex Bus to Palghar Railway Station
- Lifts in all wings
- Project close to Kelva Fort, Mahim Beach, Vadrai Beach
- Over 15,000 square feet of Landscape Garden
- Club House with Gym & Indoor sports facilities
- Multipurpose Outdoor Sports Court
- Exclusive Shopping Complex
- Play Area, Gazebo, Jogging / Walking track, water body
- Adequate Parking Facilities



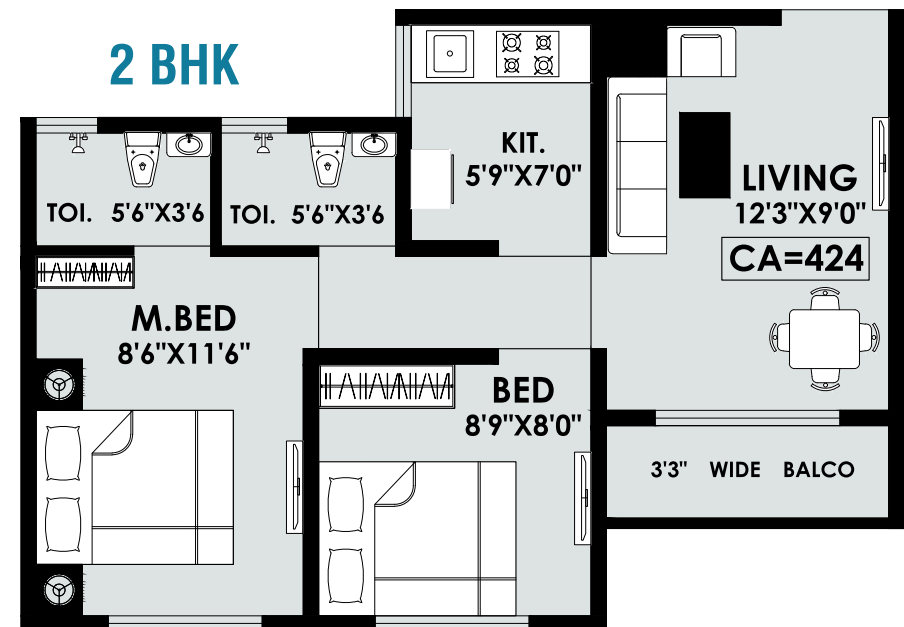
It is all about Quality of Life;
finding a happy balance between
work and friends and family.

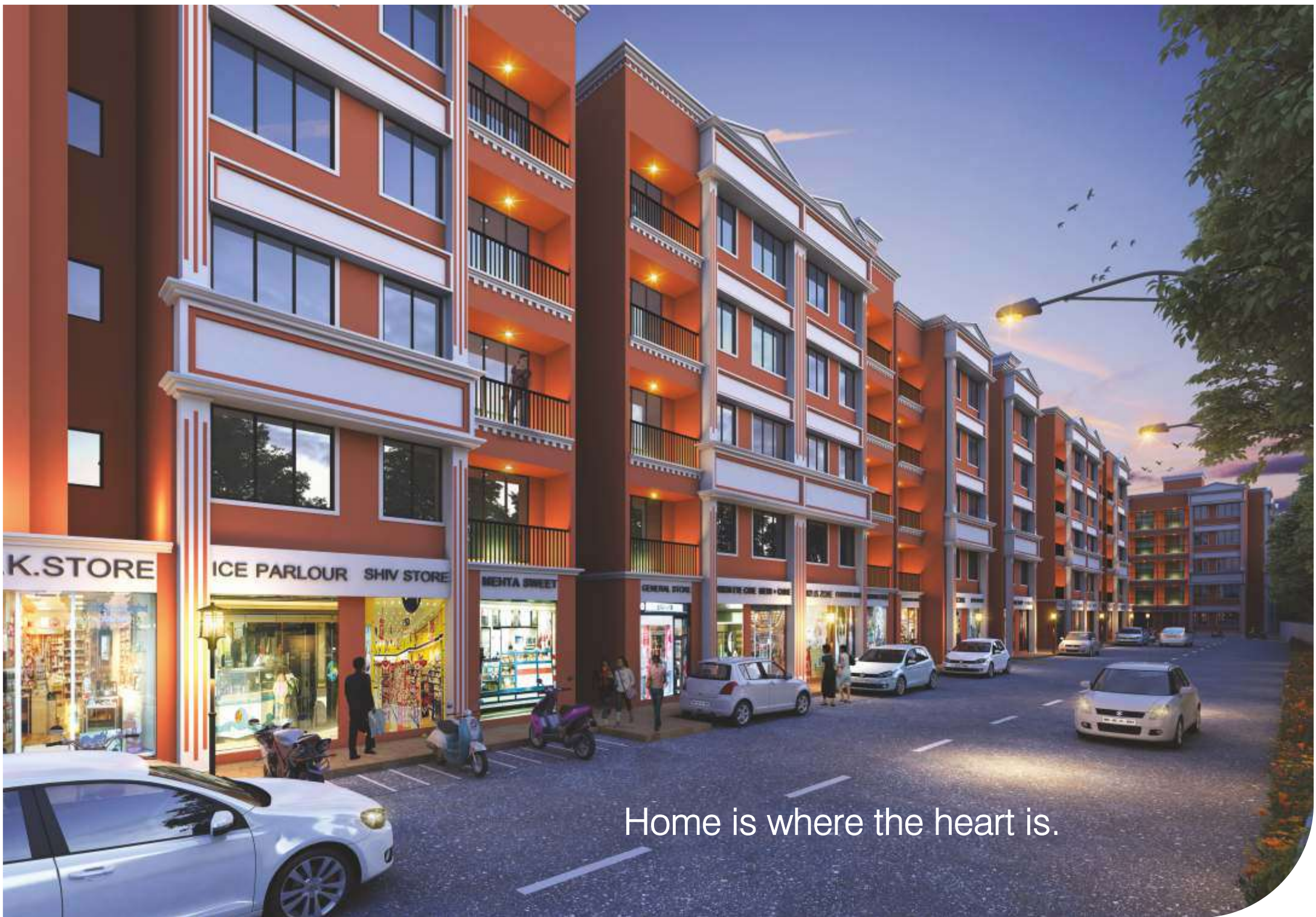




SALIENT FEATURES OF THE PROJECT

- 2 X 2 - Joint free vitrified flooring in all rooms
- Granite Kitchen Platform with Stainless Steel Sink
- High Quality Sliding Windows
- Granite Window Frames
- Concealed plumbing with branded fittings
- Full Glazed tiles in Bathroom
- High Quality Both-Side Laminated Doors
- Internal wall with Good Quality OBD
- Waterproof Texture Paint





Home is where the heart is.

LOCATION WIKI



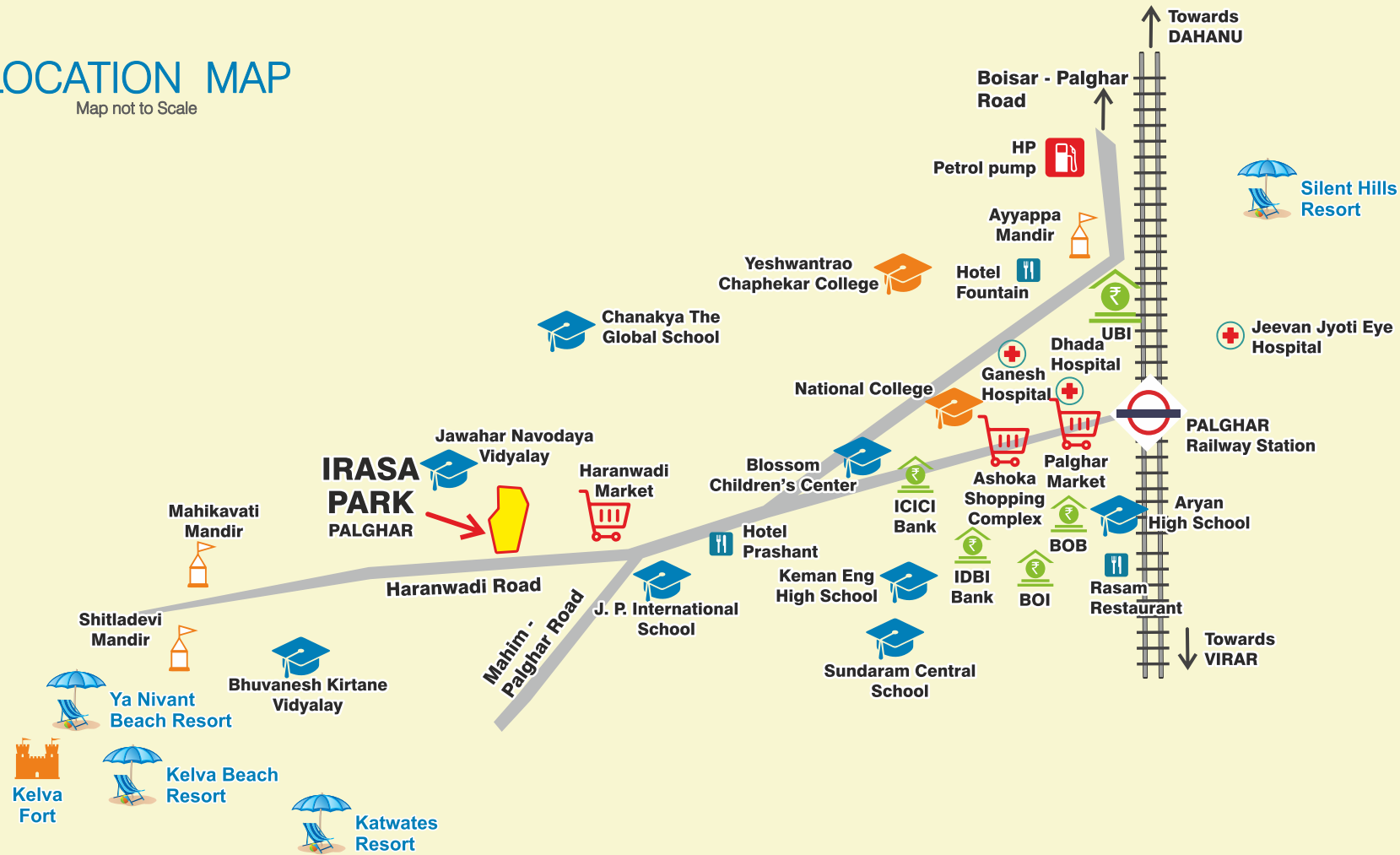
Within 5 Km Range

Between 5 - 10 Km Range

Above 10 Km Range

LOCATION MAP

Map not to Scale



Just 30 minutes from Borivali, Palghar is the fastest growing suburb of Mumbai City. It has recently been declared as the **headquarters of the newly formed Palghar district**. As a result over **Rs. 450 crore of investment** has come in for bigger roads, water and sewage lines. More than 2 lakh government employees are expected to make Palghar home in the next couple of years as Collector's office, courts and other establishments come here. With the **Mumbai-Ahmedabad Bullet train** expected to stop here, Palghar is poised for explosive growth. Just 12 kms from **Maharashtra's largest MIDC**, Palghar is the place to invest in for future 10X growth.

Some Of Our Completed Projects



Suburban Spaces LLP

Office Address : S - 6, Eternity Mall, Teen Hath Naka, Thane (W), Maharashtra, India 400602

Site Address : Survey No. 351/1, 352/3, Mauje Mahim, Near Haranwadi Naka, Tal. Palghar 401404

Phone No : 8767 800 900 | Email : sales@irasa.in | Website : www.irasa.in

DISCLAIMER : Images & Amenities in this brochures are for reference purpose only and are subject to change based on approvals without prior intimation.